

Please check the examination details below before entering your candidate information

Candidate surname					Other names				
Centre Number					Candidate Number				
Pearson Edexcel Level 1/Level 2 GCSE (9–1)					<input type="text"/> <input type="text"/> <input type="text"/> <input type="text"/> <input type="text"/>				
Time 1 hour 45 minutes					Paper reference 1 BI0/2F				
Biology PAPER 2 Foundation Tier									
You must have: Calculator, ruler								Total Marks	

Instructions

- Use **black** ink or ball-point pen.
- **Fill in the boxes** at the top of this page with your name, centre number and candidate number.
- Answer **all** questions.
- Answer the questions in the spaces provided – *there may be more space than you need.*
- Calculators may be used.
- Any diagrams may NOT be accurately drawn, unless otherwise indicated.
- You must **show all your working out** with **your answer clearly identified** at the **end of your solution**.

Information

- The total mark for this paper is 100.
- The marks for **each** question are shown in brackets – *use this as a guide as to how much time to spend on each question.*
- In questions marked with an **asterisk** (*), marks will be awarded for your ability to structure your answer logically showing how the points that you make are related or follow on from each other where appropriate.

Advice

- Read each question carefully before you start to answer it.
- Try to answer every question.
- Check your answers if you have time at the end.
- Good luck with your examination.

Turn over ►

P67065A

©2021 Pearson Education Ltd.

1/1/1/1/



Answer ALL questions. Write your answers in the spaces provided.

Some questions must be answered with a cross in a box ☒. If you change your mind about an answer, put a line through the box ☒ and then mark your new answer with a cross ☒.

1 Figure 1 shows human blood seen using a light microscope.

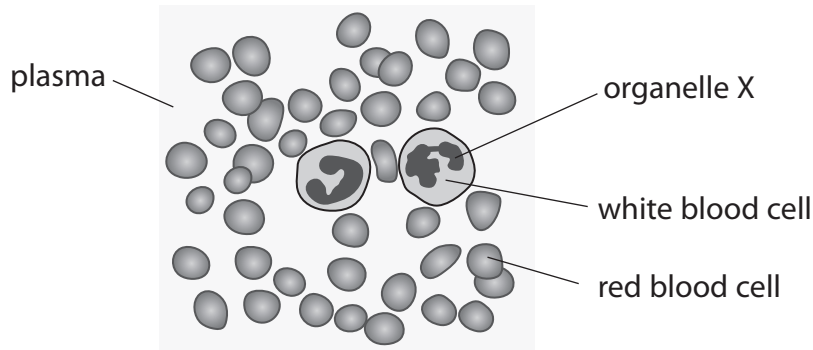


Figure 1

(a) (i) The organelle labelled X controls the activities of the white blood cell.

What is the name of organelle X?

(1)

- A mitochondrion
- B ribosome
- C chromosome
- D nucleus

(ii) Use words from the box to complete the sentences.

(2)

gas	haemoglobin	hormone
liquid	platelet	solid

Red blood cells contain the substance

Blood plasma is a

(iii) Describe **two** ways that white blood cells protect the body from disease.

(2)

1

.....

2

.....



(b) Figure 2 shows a white blood cell on a 100 μm scale.

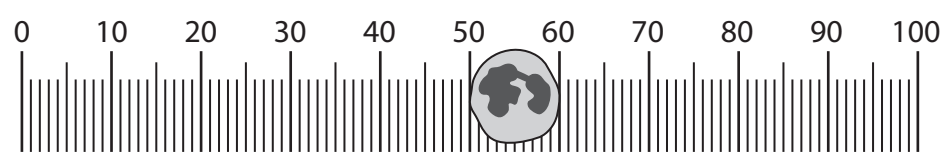


Figure 2

State the width of the white blood cell.

(1)

.....μm

(c) Figure 1 shows human blood seen using a light microscope.

Explain why using an electron microscope shows the structures in the white blood cells more clearly.

(2)

.....

.....

.....

.....

.....

(Total for Question 1 = 8 marks)

DO NOT WRITE IN THIS AREA

DO NOT WRITE IN THIS AREA

DO NOT WRITE IN THIS AREA



2 (a) There are three levels of organisation in an ecosystem.

Which order shows the levels of organisation from lowest to highest?

(1)

- A community, population, organism
- B community, organism, population
- C organism, community, population
- D organism, population, community

(b) Figure 3 shows food webs for two gardens.



Figure 3

Slug pellets are put on the soil around the lettuce plants in garden A and garden B.

Slug pellets kill slugs.

(i) A scientist predicts that the number of caterpillars will decrease in garden A.

Give **one** reason why the number of caterpillars will decrease in garden A.

(1)

(ii) The scientist predicts that the number of caterpillars will increase in garden B.

Give **one** reason why the number of caterpillars will increase in garden B.

(1)



(iii) Figure 4 shows the population of slugs in garden A for five years.

Slug pellets were used during the first year.

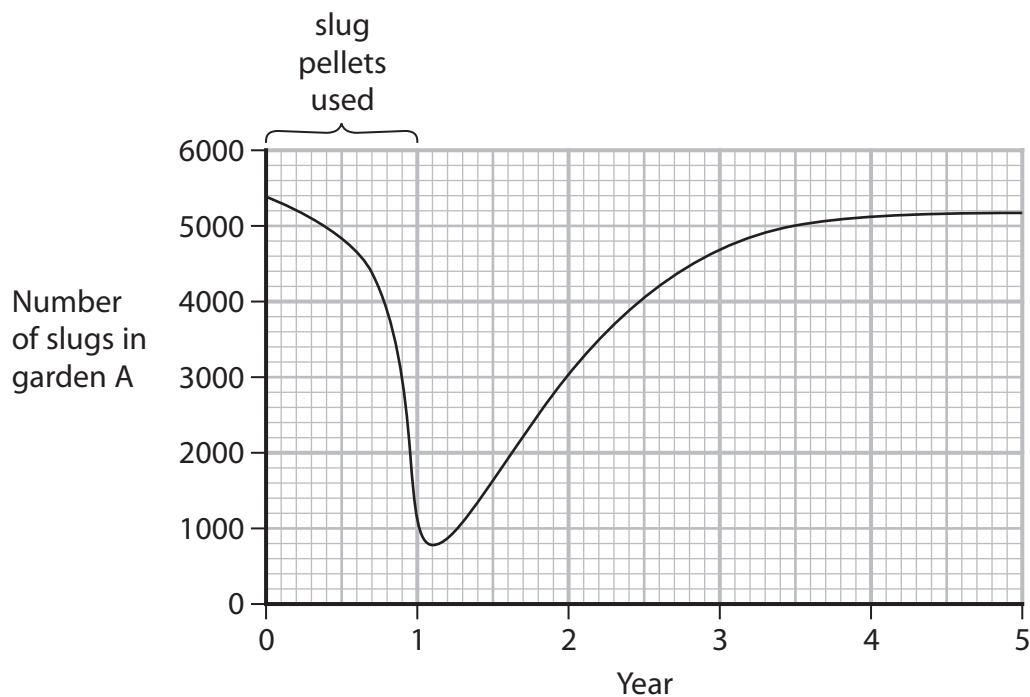


Figure 4

Describe the trend in the slug population from year 1 to year 5.

(2)

.....

.....

.....

.....

(c) (i) Flatworms from New Zealand that eat slugs are now living in the UK.

Which term describes a species from one country that is living in another country?

(1)

- A pathogenic
- B non-pathogenic
- C indigenous
- D non-indigenous



(ii) Figure 5 shows tiny white animals called mites on the skin of a slug.

The mites feed on blood.

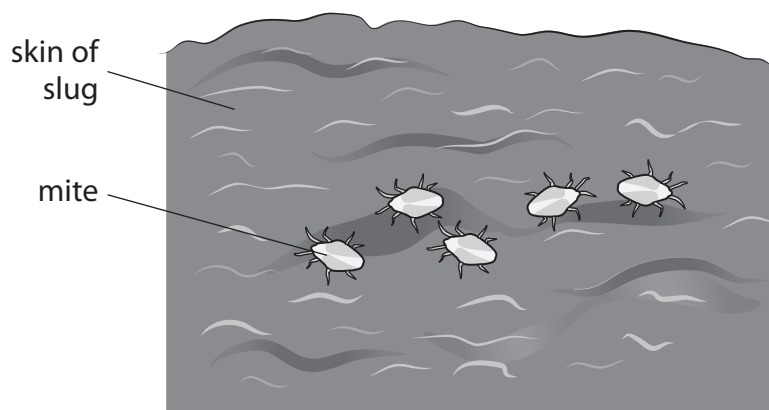


Figure 5

Explain why these mites are classed as parasites.

(2)

.....

.....

.....

.....

(Total for Question 2 = 8 marks)

DO NOT WRITE IN THIS AREA

DO NOT WRITE IN THIS AREA

DO NOT WRITE IN THIS AREA



3 A student investigated fish food.

(a) The student added some fish food to a blue liquid in a test tube.

The solution turned from blue to purple.

(i) Use words from the box to complete the sentences.

(2)

ethanol	Biuret	fat
iodine	protein	starch

The blue liquid was solution.

The purple colour showed that the fish food contained

(ii) The blue solution may be harmful if swallowed.

Which procedure is a health and safety precaution needed for this investigation?

(1)

- A use a new test tube
- B wipe up any spilt liquids
- C measure the volume of the solutions
- D use a heat proof mat

DO NOT WRITE IN THIS AREA

DO NOT WRITE IN THIS AREA

DO NOT WRITE IN THIS AREA



(b) Fish eat fish food.

The fish food contains energy.

Some of this energy is used by the fish for growth.

Figure 6 shows this energy transfer.

Each square in Figure 6 represents 1 kJ of energy.

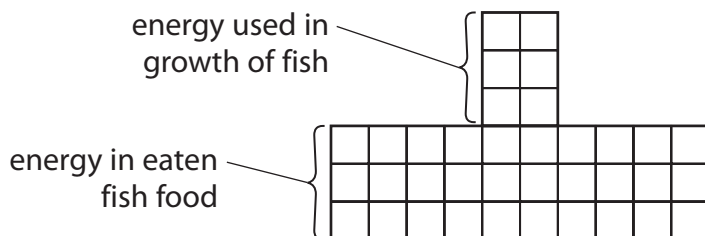


Figure 6

(i) Calculate the percentage of energy from the fish food that has been used in the growth of fish.

(2)

.....%

(ii) Describe what happened to the fish food that was eaten but was not used in the growth of the fish.

(2)

.....

.....

.....

.....

(Total for Question 3 = 7 marks)



4 (a) Endocrine glands make hormones.

Which endocrine gland is situated in the head and is attached to the brain?

(1)

- A** adrenal
- B** pancreas
- C** pituitary
- D** thyroid

Diabetics cannot effectively control the concentration of glucose in their blood.

(b) Person A has type 1 diabetes.

Person B has type 2 diabetes.

Draw one straight line from each person to the cause of their type of diabetes.

(2)

person

cause

<div style="border: 1px solid black; padding: 5px; display: inline-block;">person A (type 1)</div>	<div style="border: 1px solid black; padding: 5px; display: inline-block;">does not have a pancreas</div>
<div style="border: 1px solid black; padding: 5px; display: inline-block;">person B (type 2)</div>	<div style="border: 1px solid black; padding: 5px; display: inline-block;">cannot digest fatty foods</div>
	<div style="border: 1px solid black; padding: 5px; display: inline-block;">does not produce insulin</div>
	<div style="border: 1px solid black; padding: 5px; display: inline-block;">has cells that have stopped responding to insulin</div>
	<div style="border: 1px solid black; padding: 5px; display: inline-block;">cannot transport insulin in the blood</div>



- (c) A scientist investigated how the waist to hip ratio affected the probability of developing type 2 diabetes.

The scientist chose 100 females in each of five waist to hip ratio groups and recorded if they developed type 2 diabetes.

Figure 7 shows the results.

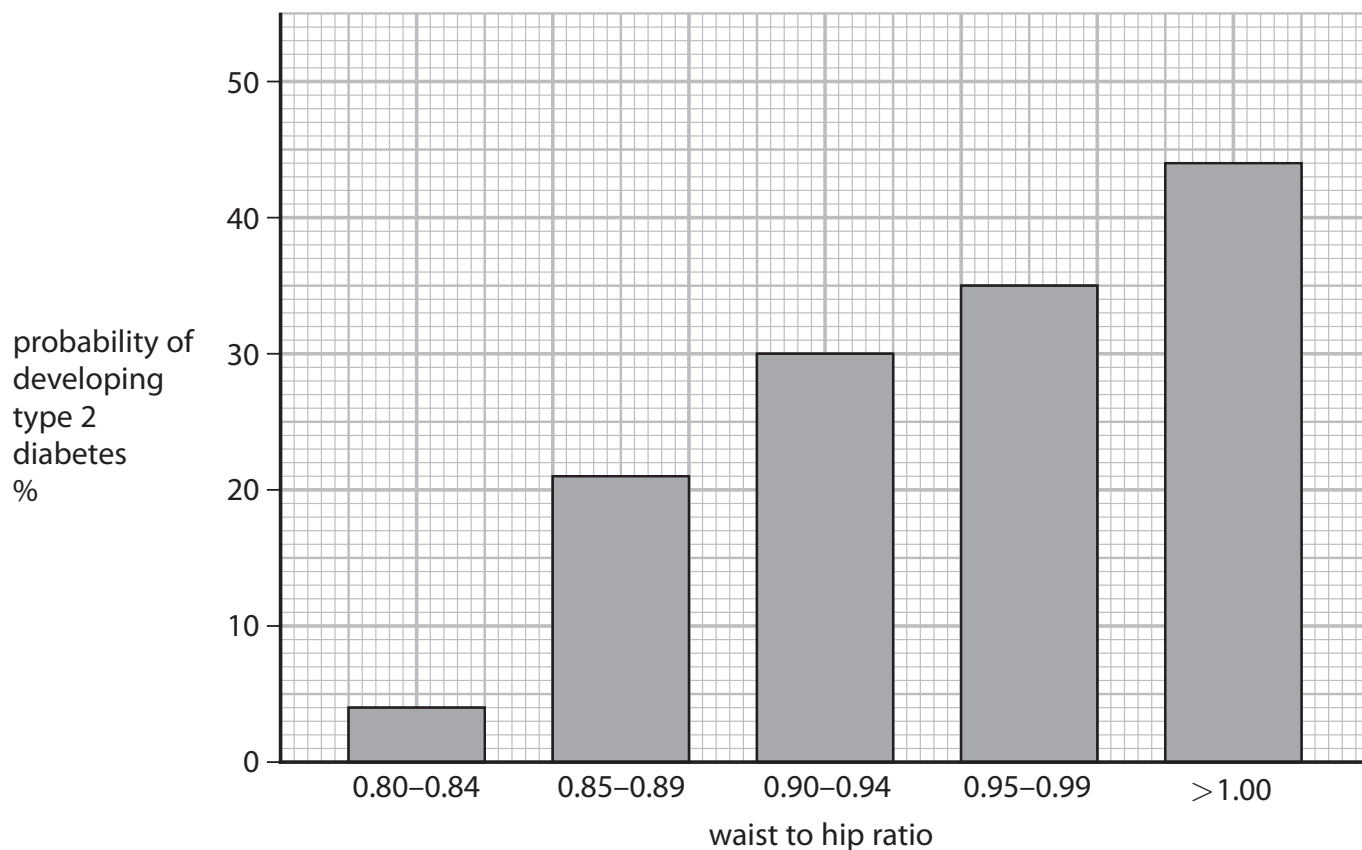


Figure 7

- (i) Describe the trend shown in Figure 7.

Use data from Figure 7 in your answer.

(2)

.....

.....

.....

.....



DO NOT WRITE IN THIS AREA

DO NOT WRITE IN THIS AREA

DO NOT WRITE IN THIS AREA

(ii) A female has a waist measurement of 78.3 cm and a hip measurement of 90.0 cm.

Calculate the waist to hip ratio for this female and use Figure 7 to estimate the probability that she will develop type 2 diabetes.

(2)

probability..... %

(d) (i) The scientist also measured the BMI of the females.

BMI and waist to hip ratio are two factors that affect the probability of females developing type 2 diabetes.

State **two** other factors about the females in the study that would affect the probability of them developing type 2 diabetes.

(2)

1

.....

2

.....

(ii) State why an athlete may have a high BMI but still have a low probability of developing type 2 diabetes.

(1)

.....

.....

(Total for Question 4 = 10 marks)



P 6 7 0 6 5 A 0 1 1 3 2

5 In Ireland during the 19th century, a mould caused potato plants to rot.

(a) Explain how this mould affected food security in Ireland.

(2)

.....

.....

.....

(b) A group of pupils investigated the effect of temperature on mould growth on bread.

Figure 8 shows the bread after being kept at different temperatures for seven days.

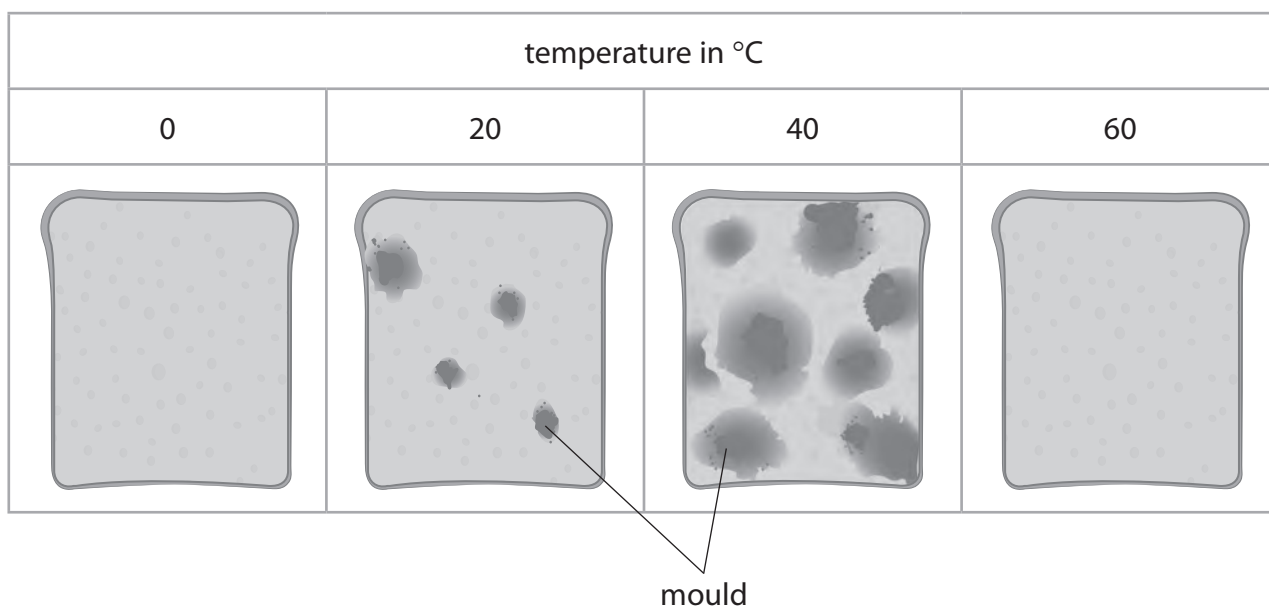


Figure 8

(i) Which is the best estimate of the percentage cover of mould on the bread at 40 °C?

(1)

- A** 0%
- B** 25%
- C** 50%
- D** 75%



(ii) State **two** conclusions that can be made about the growth of mould on the bread from 0 °C to 40 °C shown in Figure 8.

(2)

1

.....

2

.....

(iii) Explain why there was no mould growing on the bread kept at 60 °C.

(2)

.....

.....

.....

(c) Figure 9 shows some part-baked bread in a sealed bag.

The gas in the bag is nitrogen, which prevents the bread from going mouldy.



Figure 9

If the bag is opened, the bread goes mouldy within days.

State why the bread goes mouldy.

(1)

.....

.....



(d) Explain why keeping food in a fridge slows down the growth of mould.

(2)

.....

.....

.....

.....

(Total for Question 5 = 10 marks)

DO NOT WRITE IN THIS AREA

DO NOT WRITE IN THIS AREA

DO NOT WRITE IN THIS AREA



- 6 (a) Figure 10 shows a single-celled pond organism (*Amoeba proteus*).

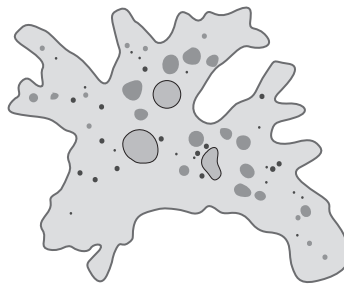


Figure 10

- (i) Which row of the table allows the net diffusion of oxygen into *Amoeba proteus*? (1)

	concentration of oxygen in water in ppm	concentration of oxygen in <i>Amoeba proteus</i> in ppm
<input type="checkbox"/> A	4	4
<input type="checkbox"/> B	10	10
<input type="checkbox"/> C	4	10
<input type="checkbox"/> D	10	4

- (ii) *Amoeba proteus* uses oxygen for aerobic respiration.

Complete the equation for aerobic respiration.

(1)

glucose + oxygen → + (+ energy is released)



(b) Humans breathe faster when they exercise.

(i) Which **two** changes allow the rate of respiration in the muscle to increase?

(1)

	heart rate	amount of glucose delivered to the muscles
<input type="checkbox"/> A	increases	increases
<input type="checkbox"/> B	increases	decreases
<input type="checkbox"/> C	decreases	increases
<input type="checkbox"/> D	decreases	decreases

(ii) Figure 11 shows breathing data for a human at rest and when running at 5 metres per second on a running machine.

activity	mean number of breaths per minute	mean volume of air in one breath in dm^3	mean volume of air breathed in dm^3 per minute
at rest	5.0	0.8	4.0
running at 5 metres per second	24.7	2.7	?

Figure 11

Calculate the mean volume of air breathed per minute when running at 5 metres per second.

Give your answer to one decimal place.

(2)

..... dm^3 per minute



(iii) Devise an investigation to compare the mean number of breaths per minute for men, with the mean number of breaths per minute for women, when running at 5 metres per second on a running machine.

(4)

.....

.....

.....

.....

.....

.....

.....

.....

.....

.....

(c) Whilst running, the leg muscles of an athlete tightened up, causing cramp.

Name the product of anaerobic respiration that can cause cramp.

(1)

.....

(Total for Question 6 = 10 marks)

DO NOT WRITE IN THIS AREA

DO NOT WRITE IN THIS AREA

DO NOT WRITE IN THIS AREA



7 Figure 12 shows how the leaves are arranged on a plant.

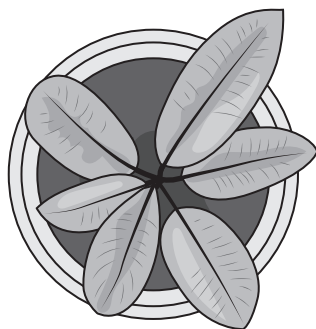


Figure 12

(a) Which reason explains why the leaves are arranged in this way?

(1)

- A** the upper leaves allow more light to reach the lower leaves
- B** the leaves do not need stomata
- C** the phloem in the leaves will absorb more water
- D** more insects will be attracted to the plant to eat the leaves

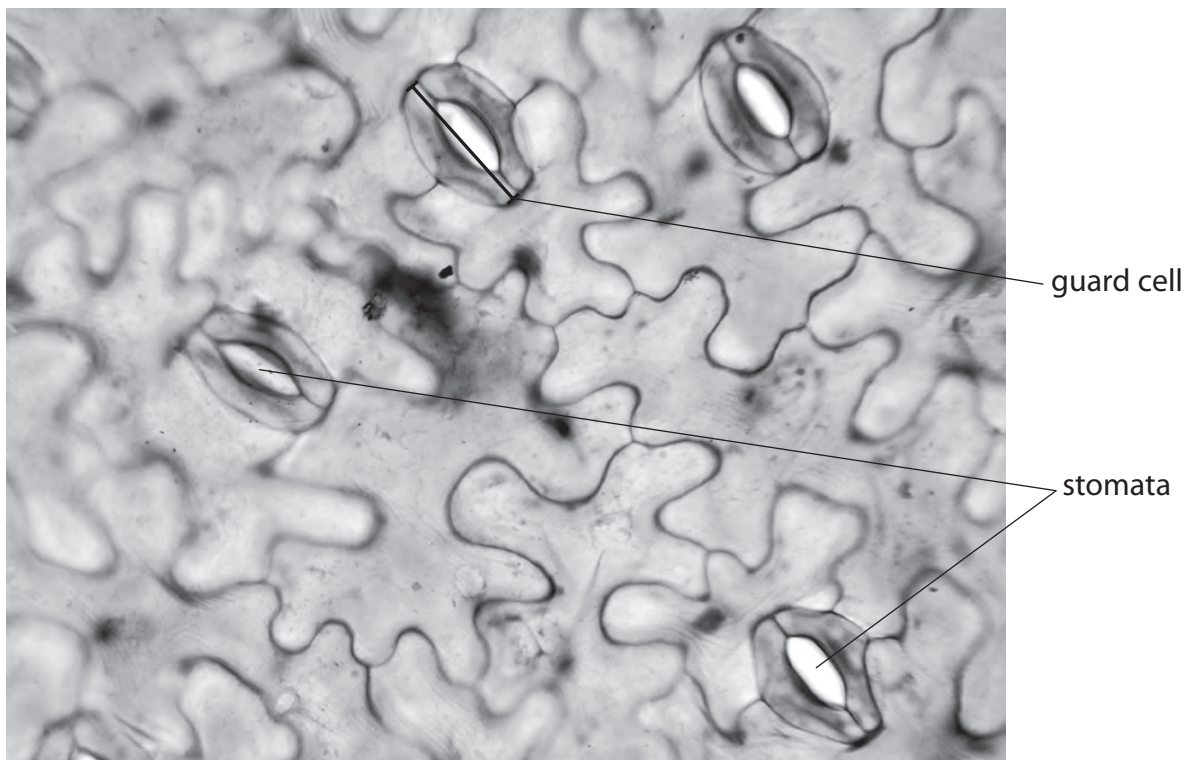
DO NOT WRITE IN THIS AREA

DO NOT WRITE IN THIS AREA

DO NOT WRITE IN THIS AREA



(b) Figure 13 shows guard cells and stomata on the lower surface of a leaf.



(Source: © Rattiya Thongdumhyu/Shutterstock)

Figure 13

Measure the length of the line on the labelled guard cell in mm.

The actual length of the labelled guard cell is 0.05 mm.

Calculate the magnification of this image.

(3)

magnification



- (c) Figure 14 shows the number of stomata per mm^2 on the lower surface of leaves from plants growing in soils with different water content.

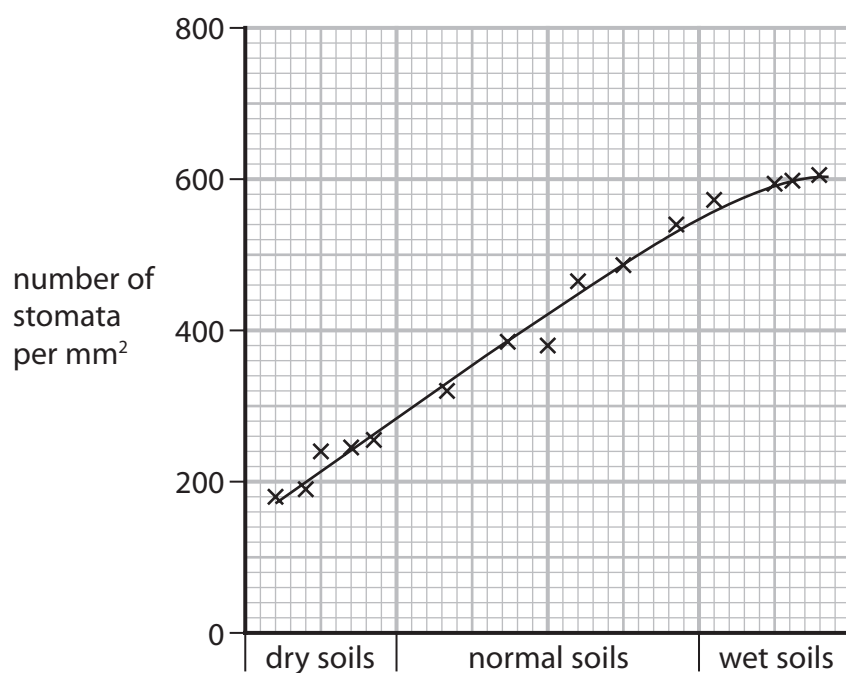


Figure 14

Explain the difference in the number of stomata per mm^2 on the leaves of the plants grown in dry and wet soils.

(2)



DO NOT WRITE IN THIS AREA

DO NOT WRITE IN THIS AREA

DO NOT WRITE IN THIS AREA

*(d) Figure 15a shows a plant that has been placed on its side.

Figure 15b shows the same plant after 5 days.

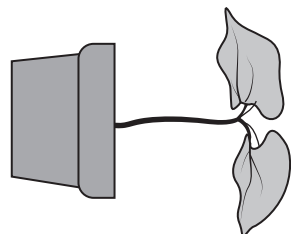


Figure 15a

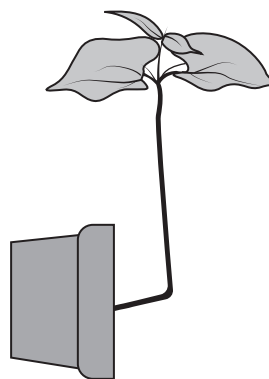


Figure 15b

Explain why the growth of the plant has changed.

(6)

A series of horizontal dotted lines provided for the student to write their explanation.

(Total for Question 7 = 12 marks)



- 8 Figure 16 shows an area of woodland with some small plants growing in the ground between the trees.



small plants

(Source: © Maksym Holovinov/Shutterstock)

Figure 16

- (a) The leaves of the small plants are green.

Describe how these plants make glucose.

(2)

.....

.....

.....

.....

.....

- (b) Name a group of organisms that break down the dead leaves and release mineral ions into the soil.

(1)

.....



- (c) The mineral ions are absorbed from the soil into the roots of plants.

Describe how these mineral ions are transported from the roots to the leaves of the plants.

(2)

.....

.....

.....

.....

.....

- (d) A scientist recorded the mean light intensity and the mean number of small plants per m^2 for six 25 m^2 areas of the woodland.

Figure 17 shows the results.

area of woodland	mean light intensity in lux	mean number of small plants per m^2
A	1500	2.7
B	1300	1.6
C	1000	1.1
D	800	0.6
E	550	0.3
F	350	0.1

Figure 17

- (i) Explain the effect of light intensity on the number of small plants per m^2 .

(2)

.....

.....

.....

.....



DO NOT WRITE IN THIS AREA

DO NOT WRITE IN THIS AREA

DO NOT WRITE IN THIS AREA

(ii) State **one** variable the scientist should have controlled to make sure the light intensity measurements could be compared.

(1)

.....

.....

(e) The scientist selects an area near the edge of the woodland where many stinging nettles are growing.

This area is partly shaded by the trees.

Describe how the scientist should use a belt transect to investigate how light intensity affects the growth of stinging nettles.

(3)

.....

.....

.....

.....

.....

.....

.....

.....

(Total for Question 8 = 11 marks)

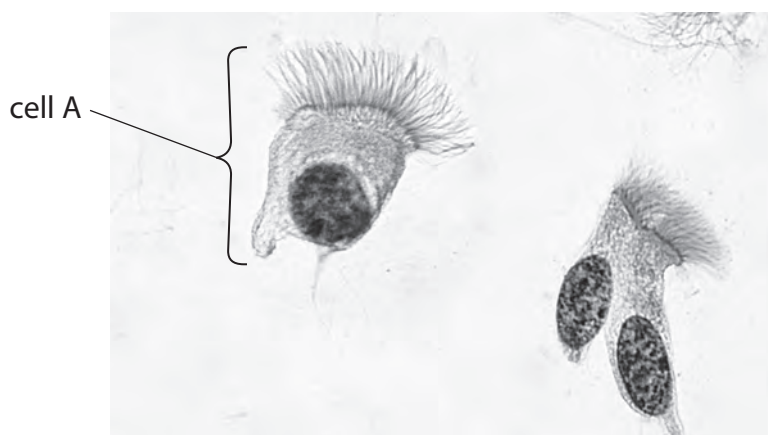
DO NOT WRITE IN THIS AREA

DO NOT WRITE IN THIS AREA

DO NOT WRITE IN THIS AREA



- 9 (a) Figure 18 shows ciliated epithelial cells from the airways of a human as seen using a light microscope.



(Source: © Jose Luis Calvo/Shutterstock)

Figure 18

- (i) Draw the cell labelled A in the box below.

Label **three** parts of this cell on your diagram.

(4)



- (ii) State the function of the ciliated epithelial cells in the airways of the human breathing system.

(1)

.....

.....

.....



(b) Figure 19 shows equipment used to investigate the rate of respiration in maggots.

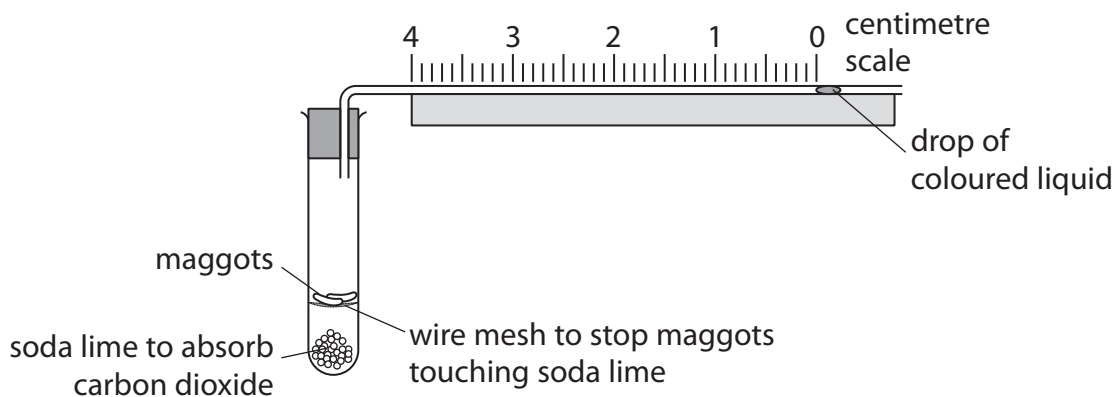


Figure 19

As the maggots respire, the drop of coloured liquid moves towards the test tube.

Figure 20 shows the position of the drop of coloured liquid after ten minutes.

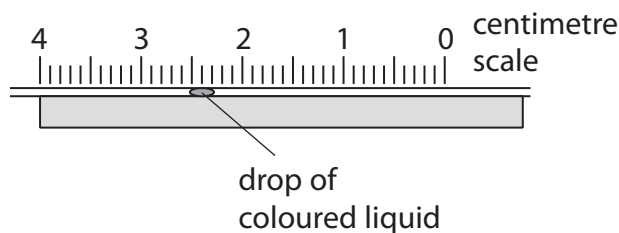


Figure 20

Use information from Figures 19 and 20 to calculate the mean rate of respiration of the maggots in mm per minute.

(2)

..... mm per minute



DO NOT WRITE IN THIS AREA

DO NOT WRITE IN THIS AREA

DO NOT WRITE IN THIS AREA

* (c) Explain how alveoli in human lungs are adapted for gas exchange.

Include the names of the gases that are being exchanged.

(6)

Area with horizontal dotted lines for writing the answer.

(Total for Question 9 = 13 marks)



10 Figure 21 shows the human urinary system.



(Source: © La Gorda/Shutterstock)

Figure 21

(a) Urine is made by removing water, urea and salts from the blood.

Use the letter X to label where urine is made.

(1)

(b) Which substance is converted to urea in the liver?

(1)

- A** amino acids
- B** sugars
- C** lipids
- D** potassium ions

DO NOT WRITE IN THIS AREA

DO NOT WRITE IN THIS AREA

DO NOT WRITE IN THIS AREA



(c) A patient cannot remove enough urea from the blood when making urine.

Figure 22 shows a dialysis machine attached to the arm of this patient.

Their blood is pumped out of their arm, passed through the dialysis machine, and then put back into the patient.

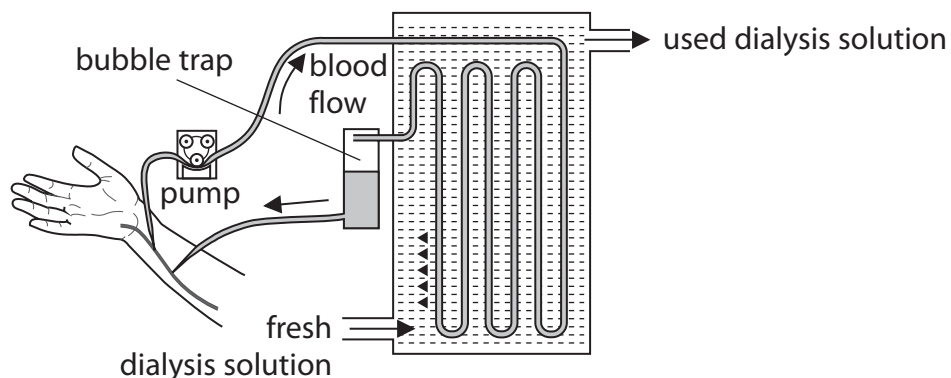


Figure 22

(i) Describe what happens to urea as the blood passes through the dialysis machine. (2)

.....

.....

.....

.....

.....

(ii) Two patients need to have dialysis treatment.

Patient A needs this treatment three times a week.

Patient B needs this treatment once a week.

Give **one** reason why patient B needs dialysis treatment less often than patient A. (1)

.....

.....



DO NOT WRITE IN THIS AREA

DO NOT WRITE IN THIS AREA

DO NOT WRITE IN THIS AREA

(d) Describe how to test for glucose in the dialysis fluid.

(3)

.....

.....

.....

.....

.....

.....

(e) Urease is an enzyme that breaks down urea into smaller molecules.

Explain why urease will not break down starch into smaller molecules.

(3)

.....

.....

.....

.....

.....

.....

.....

.....

.....

(Total for Question 10 = 11 marks)

TOTAL FOR PAPER = 100 MARKS



DO NOT WRITE IN THIS AREA

DO NOT WRITE IN THIS AREA

DO NOT WRITE IN THIS AREA

BLANK PAGE



DO NOT WRITE IN THIS AREA

DO NOT WRITE IN THIS AREA

DO NOT WRITE IN THIS AREA

BLANK PAGE

